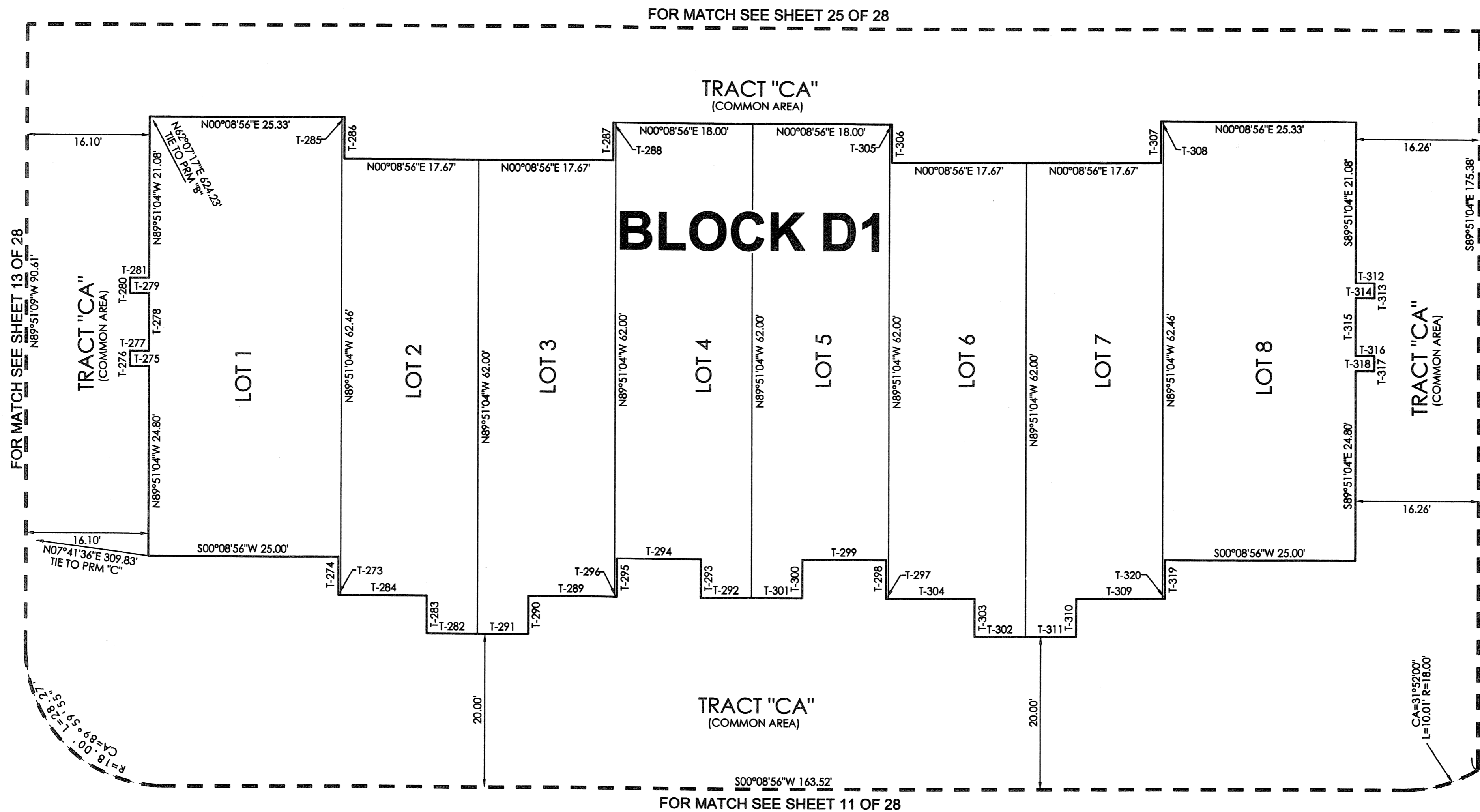
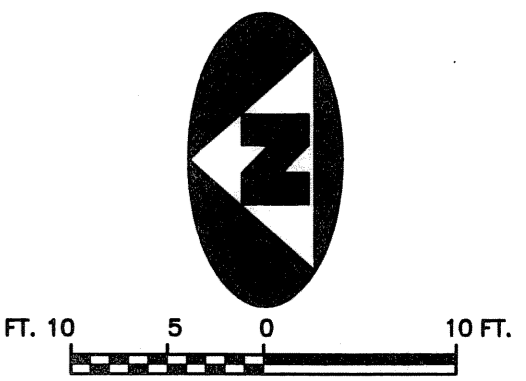


# CIELO TOWNHOMES AT THE SHOPS OF DONALD ROSS

182

BEING A REPLAT OF TRACT "R", THE SHOPS OF DONALD ROSS REPLAT OF TRACT "A", RECORDED IN PLAT BOOK 103, PAGE 142, PUBLIC RECORDS, PALM BEACH COUNTY, FLORIDA AND LYING IN THE NORTHWEST ONE-QUARTER OF SECTION 25, TOWNSHIP 41 SOUTH, RANGE 42 EAST, CITY OF PALM BEACH GARDENS, PALM BEACH COUNTY, FLORIDA.



### TANGENT TABLE

T-273	S00°08'56\"W 0.33'
T-274	N89°51'04\"W 5.00'
T-275	S00°08'56\"W 2.50'
T-276	N89°51'04\"W 2.00'
T-277	N00°08'56\"E 2.50'
T-278	N89°51'04\"W 7.58'
T-279	S00°08'56\"W 2.50'
T-280	N89°51'04\"W 2.00'
T-281	N00°08'56\"E 2.50'
T-282	S00°08'56\"E 6.67'
T-283	N89°51'04\"W 5.00'
T-284	S00°08'56\"W 11.33'
T-285	N00°08'56\"E 0.33'
T-286	S89°51'04\"E 5.46'
T-287	N89°51'04\"W 5.00'
T-288	N00°08'56\"E 0.33'
T-289	S00°08'56\"W 11.33'
T-290	S89°51'04\"E 5.00'
T-291	S00°08'56\"W 6.67'
T-292	S00°08'56\"W 6.67'
T-293	N89°51'04\"W 5.00'
T-294	S00°08'56\"W 11.00'
T-295	S89°51'04\"E 5.00'
T-296	S00°08'56\"W 0.33'
T-297	S00°08'56\"W 0.33'
T-298	N89°51'04\"W 5.00'
T-299	S00°08'56\"W 11.00'
T-300	S89°51'04\"E 5.00'
T-301	S00°08'56\"W 6.67'
T-302	S00°08'56\"W 6.67'
T-303	N89°51'04\"W 5.00'
T-304	S00°08'56\"W 11.33'
T-305	N00°08'56\"E 0.33'
T-306	S89°51'04\"E 5.00'
T-307	N89°51'04\"W 5.46'
T-308	N00°08'56\"E 0.33'
T-309	S00°08'56\"W 11.33'
T-310	S89°51'04\"E 5.00'
T-311	S00°08'56\"W 6.67'
T-312	N00°08'56\"E 2.50'
T-313	S89°51'04\"E 2.00'
T-314	S00°08'56\"W 2.50'
T-315	S89°51'04\"E 7.58'
T-316	N00°08'56\"E 2.50'
T-317	S89°51'04\"E 2.00'
T-318	S00°08'56\"W 2.50'
T-319	S89°51'04\"E 5.00'
T-320	S00°08'56\"W 0.33'

### LEGEND

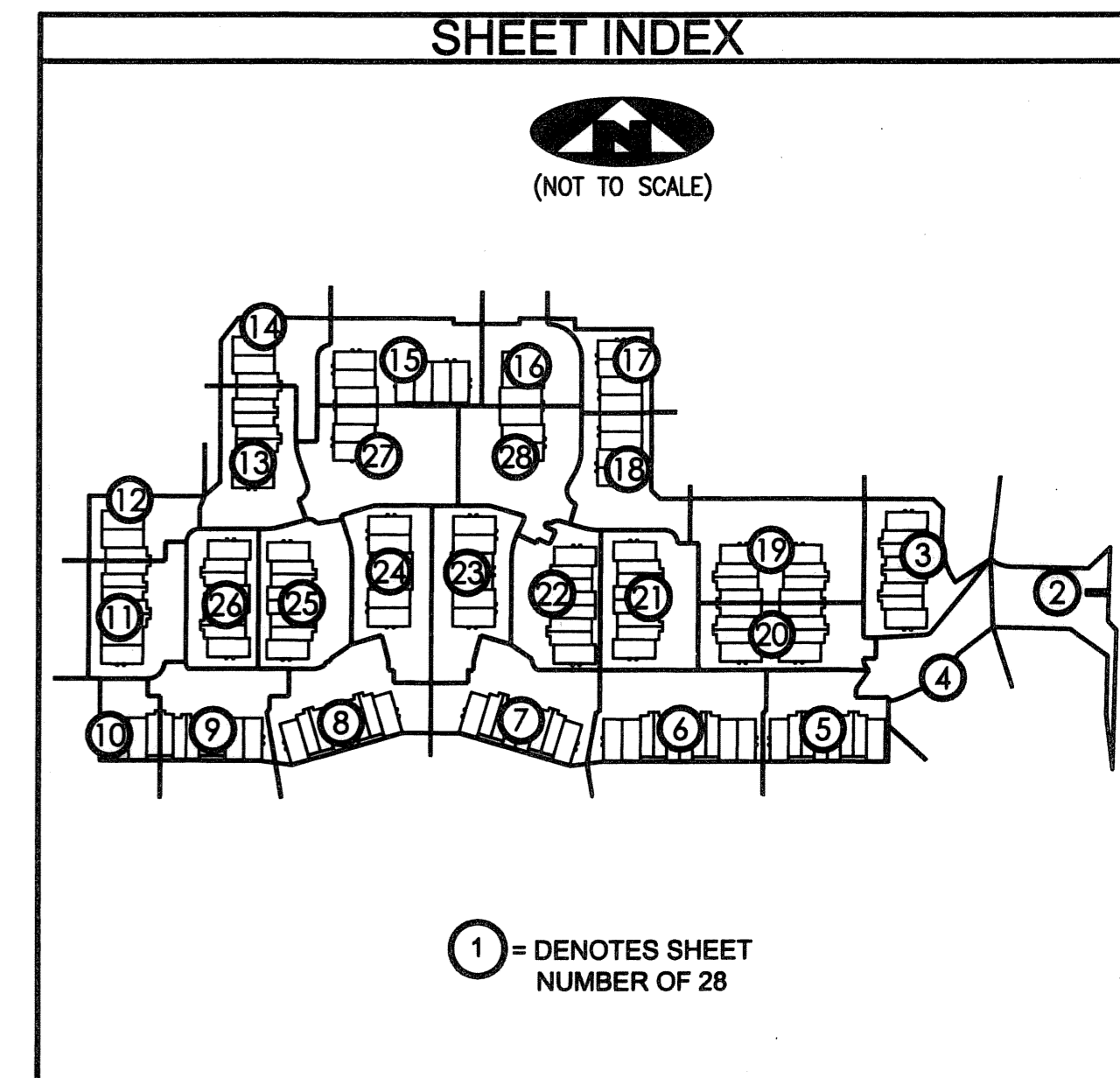
(R)	DENOTES A RADIAL LINE	R	DENOTES RADIUS DISTANCE	⊙	DENOTES A SET PERMANENT CONTROL POINT	□	DENOTES A SET PERMANENT REFERENCE MONUMENT (LB 7344)
C/L	DENOTES A CENTERLINE	L	DENOTES ARC LENGTH DISTANCE	⊙	DENOTES A FOUND PERMANENT REFERENCE MONUMENT (LB 2171)		
DE	DENOTES DRAINAGE EASEMENT	CA	DENOTES CENTRAL ANGLE				
SJA	DENOTES SEACOAST UTILITY AUTHORITY	LCB	DENOTES LONG CHORD BEARING				
LS	DENOTES LIFT STATION EASEMENT	CHD	DENOTES CHORD DISTANCE				
EAE	DENOTES EMERGENCY ACCESS EASEMENT	ORB	DENOTES OFFICIAL RECORDS BOOK	⊗	DENOTES A SEACOAST UTILITY EASEMENT (ORB 17773, PAGE 469)	⊗	DENOTES AN INGRESS, EGRESS, DRAINAGE AND UTILITY EASEMENT (PB 103, PAGE 142)

### SURVEYOR'S NOTES

1. THE BASE BEARING, AS SHOWN HEREON, IS S01°22'09\"W ALONG THE EAST LINE OF TRACT "R", THE SHOPS OF DONALD ROSS REPLAT OF TRACT "A", RECORDED IN PLAT BOOK 103, PAGE 142.
2. IN THOSE INSTANCES WHERE UTILITY OR DRAINAGE STRUCTURES ARE CONSTRUCTED IN CONFLICT WITH THE PLATTED PERMANENT CONTROL POINT POSITION STRADDLERS MONUMENTED AS PERMANENT CONTROL POINTS WILL BE SET TO REFERENCE THE PLATTED POSITION.
3. LINES THAT INTERSECT CURVES ARE NOT RADIAL UNLESS OTHERWISE NOTED.
4. THIS INSTRUMENT WAS PREPARED BY WM. R. VAN CAMPEN, P.S.M. NO. 2424, IN AND FOR THE OFFICES OF ASSOCIATED LAND SURVEYORS, INC., 4152 WEST BLUE HERON BOULEVARD, SUITE 121, RIVIERA BEACH, FLORIDA, 33404

FILE: CIELOPLOT

FB:	WO.NO.: P238
SCALE: 1"=10'	DATE: 12/25/2004
DWN: KVC	SHEET 26 OF 28



**ASSOCIATED LAND SURVEYORS, INC.**  
 4152 W. BLUE HERON BOULEVARD—SUITE 121  
 RIVIERA BEACH FLORIDA 33404 LB NO. 7344  
 PHONE: (561) 848-2102 FAX: (561) 844-9659 EMAIL: ALLSURVEY@AOL.COM